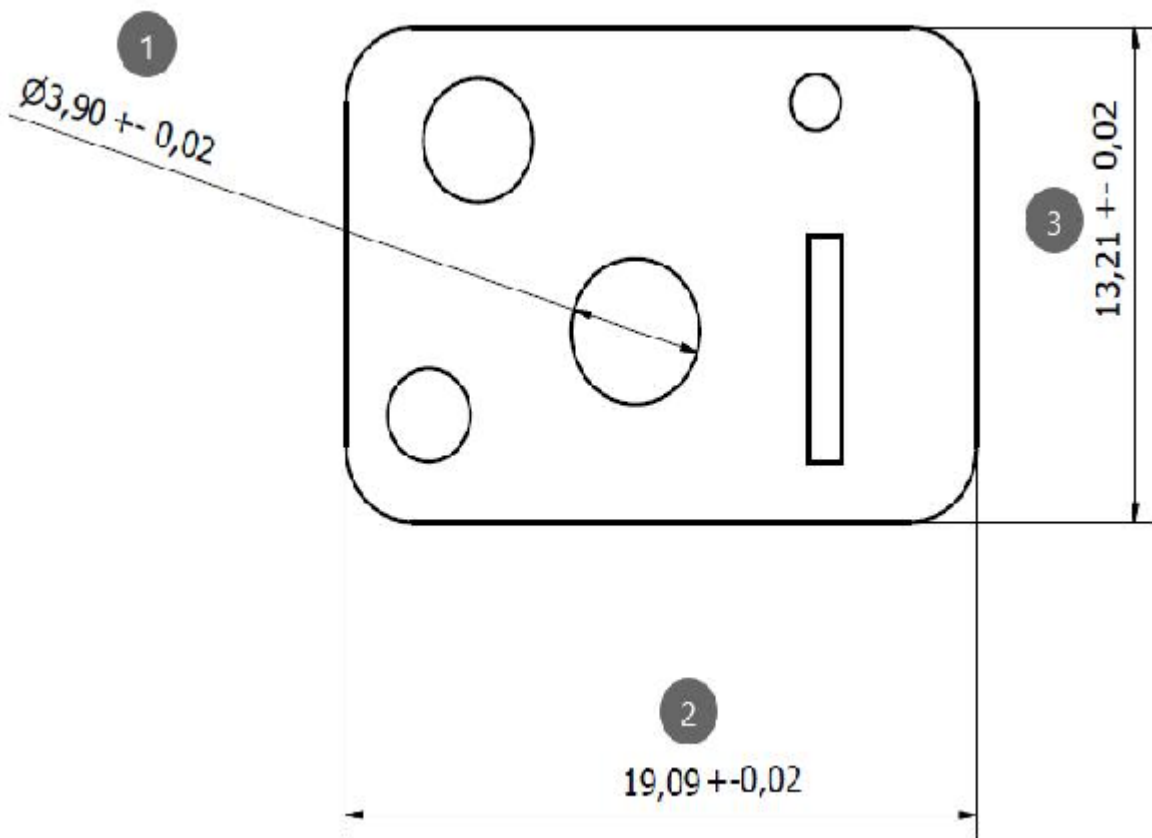


Sector	Covi Precision	Dept./Cost./Prod.	QA	Op.Name.	Søren Thrane	Date/Time	09-07-2018
--------	----------------	-------------------	----	----------	--------------	-----------	------------

Part number **100xxxx**
Part description **Plate for insert**
Covi PO. **5522**
Covi Charge no **3740**



Rem.



Sample Analysis

Sector	Covi Precision	Dept./Cost./Prod.	QA	Op.Name.	Søren Thrane	Date/Time	09-07-2018
--------	----------------	-------------------	----	----------	--------------	-----------	------------

Part							
Part number	100xxxx	Covi Charge no	3740	Number of values w ithin tolerance	25		
Part descr.	Plate for insert	Covi PO.	5522	Number of values outside tolerance	0		
Rem.							

Char.No.	Char.Descr.	LSL	USL	X ₁	X ₂	X ₃	X ₄	X ₅	X ₆	X ₇	X ₈	X ₉
1	Diameter	3,88	3,92	3,90	3,90	3,91	3,90	3,90	3,90	3,91	3,90	3,90
3	Hight	13,19	13,23	13,21	13,21	13,22	13,21	13,21	13,21	13,20	13,21	13,21
2	Width	19,07	19,11	19,09	19,09	19,09	19,09	19,10	19,10	19,10	19,09	19,09

Char.No.	Char.Descr.	LSL	USL	X ₁₀	X ₁₁	X ₁₂	X ₁₃	X ₁₄	X ₁₅	X ₁₆	X ₁₇	X ₁₈
1	Diameter	3,88	3,92	3,90	3,90	3,90	3,90	3,90	3,90	3,90	3,90	3,90
3	Hight	13,19	13,23	13,21	13,21	13,21	13,22	13,21	13,21	13,21	13,20	13,21
2	Width	19,07	19,11	19,09	19,10	19,09	19,09	19,09	19,09	19,10	19,10	19,09

Char.No.	Char.Descr.	LSL	USL	X ₁₉	X ₂₀	X ₂₁	X ₂₂	X ₂₃	X ₂₄	X ₂₅	X ₂₆	X ₂₇
1	Diameter	3,88	3,92	3,91	3,91	3,90	3,90	3,91	3,90	3,90		
3	Hight	13,19	13,23	13,21	13,21	13,21	13,21	13,22	13,21	13,21		
2	Width	19,07	19,11	19,09	19,09	19,09	19,09	19,10	19,09	19,09		

Sector	Covi Precision	Dept./Cost./Prod.	QA	Op.Name.	Søren Thrane	Date/Time	09-07-2018
--------	----------------	-------------------	----	----------	--------------	-----------	------------

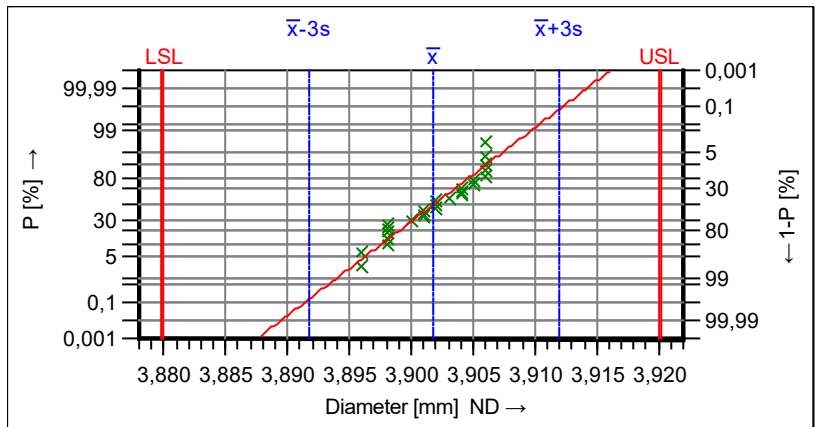
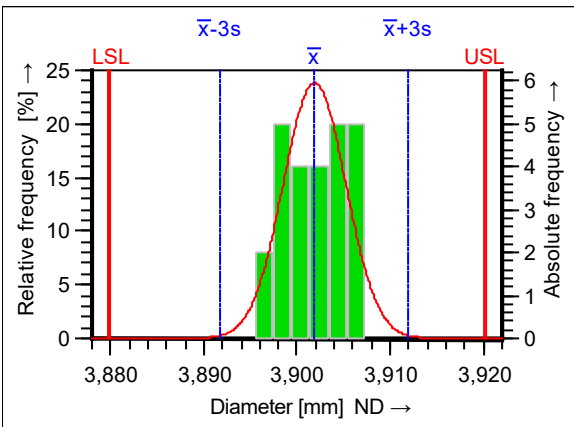
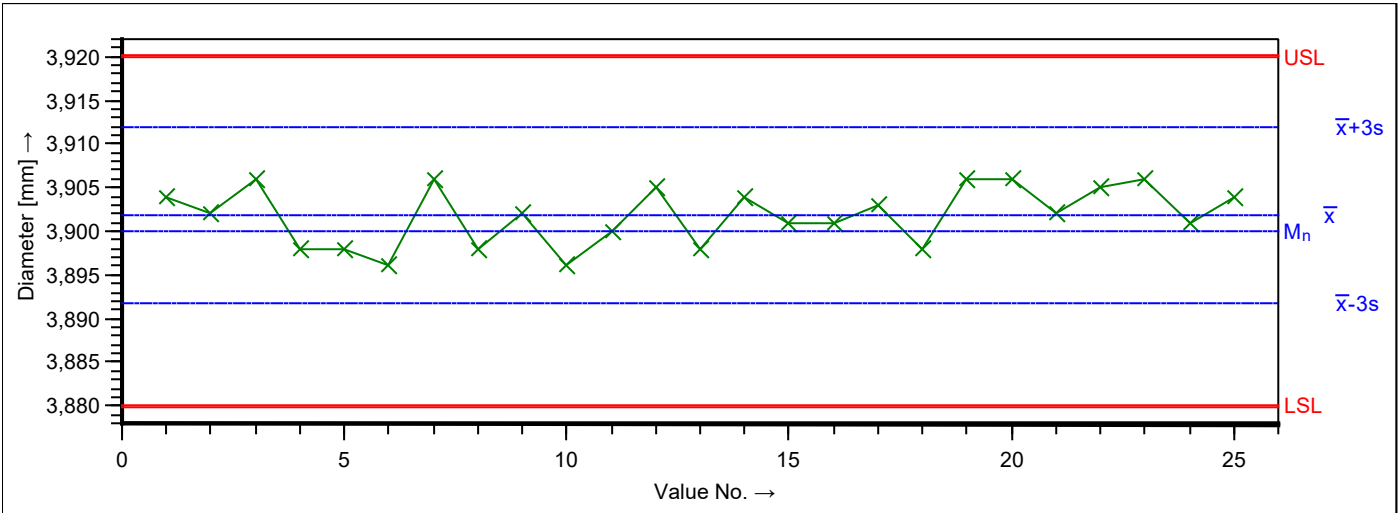
Part							
Part number	100xxxx	Covi Charge no	3740	Number of values w ithin tolerance	25		
Part descr.	Plate for insert	Covi PO.	5522	Number of values outside tolerance	0		
Rem.							

Cha	Char.Descr.	Gage Descr.	\bar{x}	s	Box plot	Index	Index	Capability in	Evaluation
1	Diameter	Werth Scope	3.9018	0.00335		$P_p = 1.99$	$P_{pk} = 1.81$		
3	Hight	Werth Scope	13.2114	0.00379		$P_p = 1.76$	$P_{pk} = 1.64$		
2	Width	Werth Scope	19.0922	0.00405		$P_p = 1.70$	$P_{pk} = 1.59$		

Sector	Covi Precision	Dept./Cost./Prod.	QA	Op.Name.	Søren Thrane	Date/Time	09-07-2018
--------	----------------	-------------------	----	----------	--------------	-----------	------------

Part no.	100xxxx	Part descr.	Plate for insert					
Covi Charge	3740	Char.Descr.	Diameter	Nom.val.	3,90	0,02	USL	3,92
Covi PO.	5522	Char.No.	1	Unit	mm	-0,02	LSL	3,88
Char.Type	variable	Char.Class	of sec. Importance		Gage Descr.	Werth Scope	Decimal Pl.	2

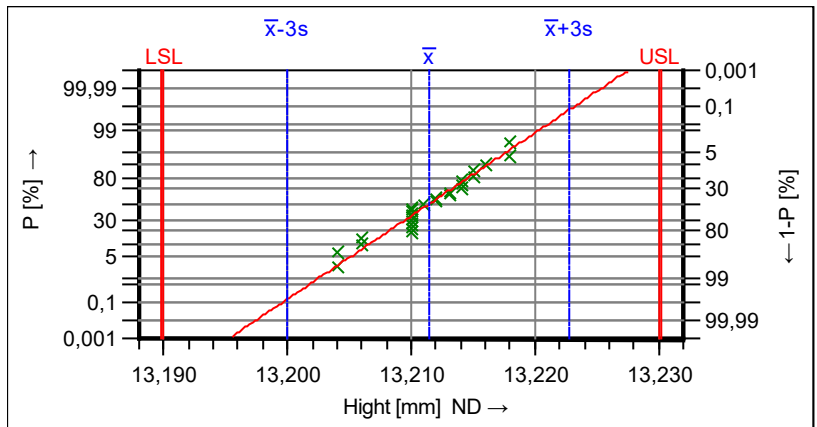
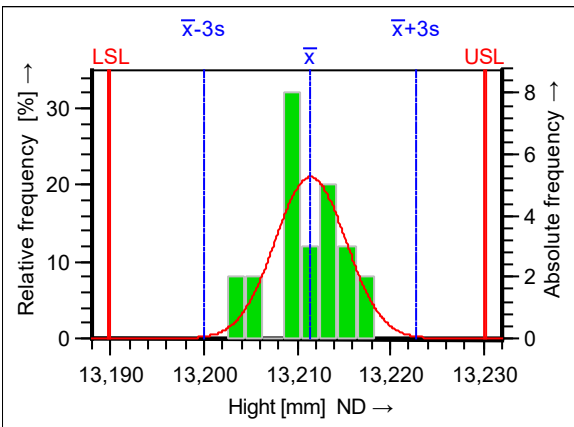
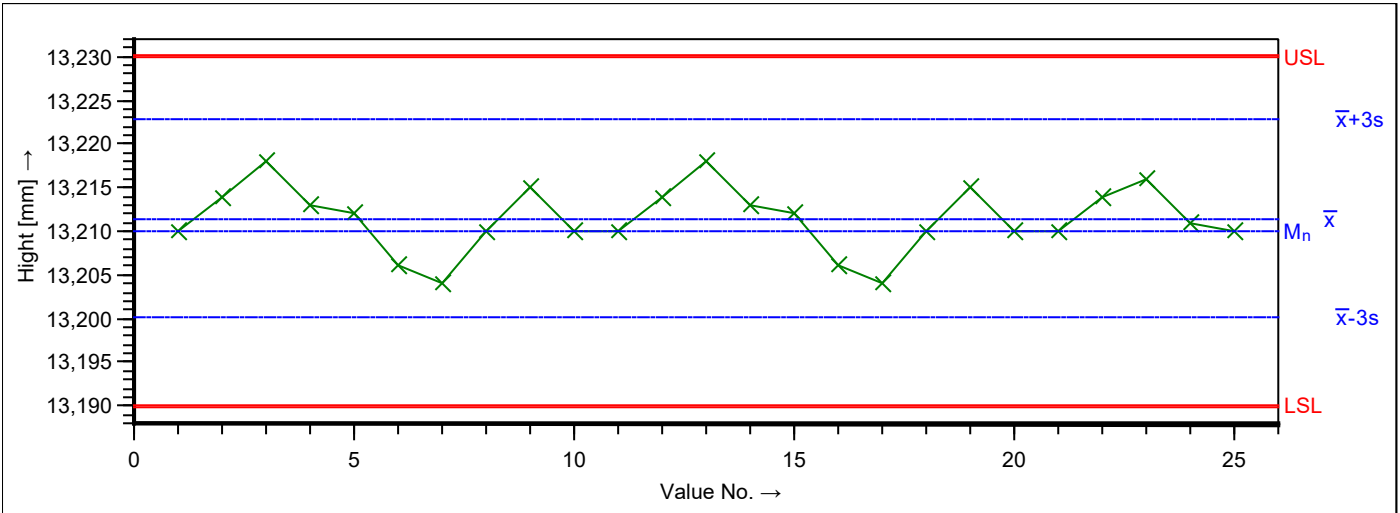
Evaluation from 09-07-2018 07:57:31 to 09-07-2018 08:13:55
 Remark



Drawing Values		Collected Values		Statistics	
T _m	3.90	\bar{x}	3.902	\bar{x}	3.9018
LSL	3.88	X _{min}	3.90	s	0.00335
USL	3.92	X _{max}	3.91	X _{50%}	3.9018
T	0.04	R	0.01	X _{0,135%}	3.8918
Characteristics Class : of sec. Importance		n _{eff}	25	X _{99,865%}	3.9119
		n _{tot}	25	6s	0.0201
		n _{<T>}	25/100.00%	p _{<T>}	100.00 %
		n _{>USL}	0/0.00%	p _{>USL}	0.00%
		n _{<LSL}	0/0.00%	p _{<LSL}	0.00%

Model distribution		Normal Distribution	
Calculation method		M1 _{1,6} Percentile (0,135%-x-bar-99,865%)	
Potential Capability index (A)	P _p	1.43 ≤ 1.99 ≤ 2.55	
Critical capability index (A)	P _{pk}	1.28 ≤ 1.81 ≤ 2.33	
The requirements were met (P _p , P _{pk} , LV)			
Demand Potential Capability index (A)	P _{p target}	1.47 (1.33)	
Demand Critical capability index (A)	P _{pk target}	1.47 (1.33)	
Covi Ppk 1,33			

Sector	Covi Precision	Dept./Cost./Prod.	QA	Op.Name.	Søren Thrane	Date/Time	09-07-2018
Part no.	100xxxx	Part descr.	Plate for insert				
Covi Charge	3740	Char.Descr.	Hight	Nom.val.	13,21	0,02	USL 13,23
Covi PO.	5522	Char.No.	3	Unit	mm	-0,02	LSL 13,19
Char.Type	variable	Char.Class	of sec. Importance		Gage Descr.	Werth Scope	Decimal Pl. 2
Evaluation	from	09-07-2018 08:01:43		to	09-07-2018 08:14:59		
Remark							

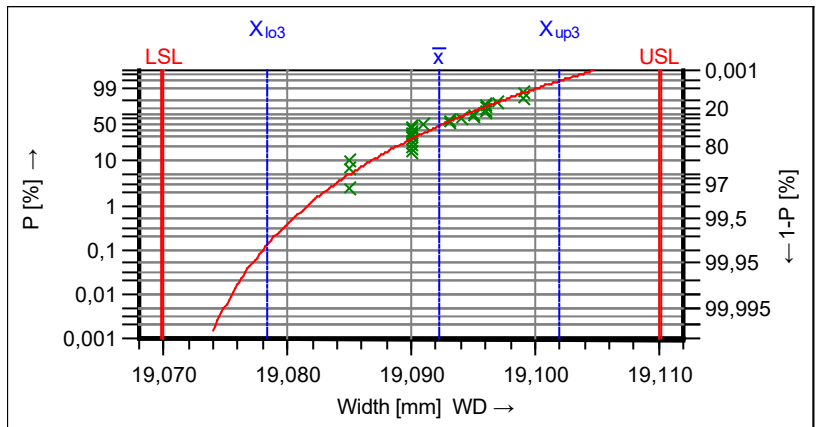
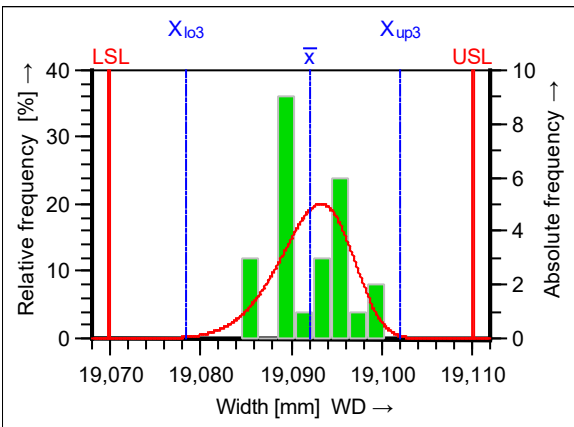
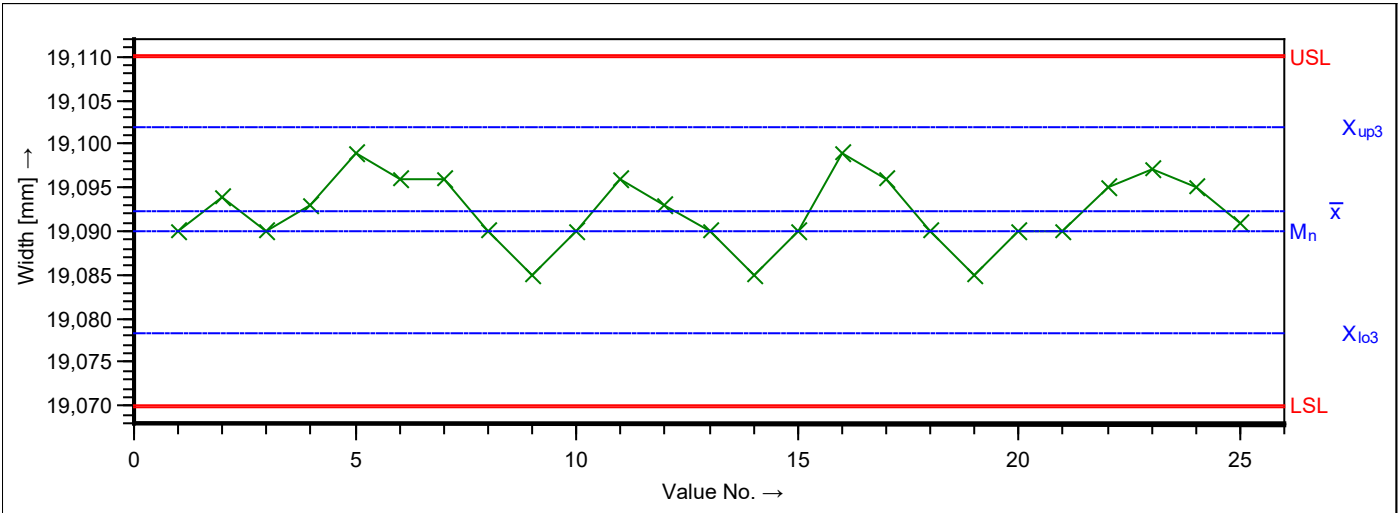


Drawing Values		Collected Values		Statistics	
T _m	13.21	\bar{x}	13.211	\bar{x}	13.2114
LSL	13.19	X _{min}	13.20	s	0.00379
USL	13.23	X _{max}	13.22	X _{50%}	13.2114
T	0.04	R	0.01	X _{0,135%}	13.2000
Characteristics Class : of sec. Importance		n _{eff}	25	X _{99,865%}	13.2228
		n _{tot}	25	6s	0.0227
		n<T>	25/100.00%	p<T>	100.00 %
		n>USL	0/0.00%	p>USL	0.00%
		n<LSL	0/0.00%	p<LSL	0.00%
Model distribution		Normal Distribution			
Calculation method		M1,6 Percentile (0,135%- \bar{x} -99,865%)			
Potential Capability index (A)	P _p	1.27	1.76	2.26	
Critical capability index (A)	P _{pk}	1.16	1.64	2.12	
The requirements were met (P _p , P _{pk} , LV)					
Demand Potential Capability index (A)	P _{p target}			1.47	(1.33)
Demand Critical capability index (A)	P _{pk target}			1.47	(1.33)
Covi Ppk 1,33					

Sector	Covi Precision	Dept./Cost./Prod.	QA	Op.Name.	Søren Thrane	Date/Time	09-07-2018
--------	----------------	-------------------	----	----------	--------------	-----------	------------

Part no.	100xxxx	Part descr.	Plate for insert					
Covi Charge	3740	Char.Descr.	Width	Nom.val.	19,09	0,02	USL	19,11
Covi PO.	5522	Char.No.	2	Unit	mm	-0,02	LSL	19,07
Char.Type	variable	Char.Class	of sec. Importance		Gage Descr.	Werth Scope	Decimal Pl.	2

Evaluation from 09-07-2018 07:59:30 to 09-07-2018 08:14:31
 Remark



Drawing Values		Collected Values		Statistics	
T_m	19.09	\bar{x}	19.091	\bar{x}	19.0922
LSL	19.07	X_{min}	19.09	s	0.00405
USL	19.11	X_{max}	19.10	$X_{50\%}$	0.0230
T	0.04	R	0.01	$X_{0.135\%}$	19.0784 [rt]
Characteristics Class : of sec. Importance		n_{eff}	25	$X_{99.865\%}$	19.1020 [rt]
		n_{tot}	25	$X_{up3}-X_{lo3}$	0.0236 [rt]
		$n_{<T>}$	25/100.00%	$p_{<T>}$	100.00 %
		$n_{>USL}$	0/0.00%	$p_{>USL}$	0.00%
		$n_{<LSL}$	0/0.00%	$p_{<LSL}$	0.00%

Model distribution: Weibull distribution

Calculation method: M1_{3,6} Percentile (0,135%-50%-99,865%)

Potential Capability index (A)	P_p	1.22 ≤ 1.70 ≤ 2.17	
--------------------------------	-------	---------------------------	--

Critical capability index (A)	P_{pk}	1.12 ≤ 1.59 ≤ 2.06	
-------------------------------	----------	---------------------------	--



The requirements were met (P_p, P_{pk}, LV)



Demand Potential Capability index (A)	$P_{p,target}$	1.47 (1.33)
Demand Critical capability index (A)	$P_{pk,target}$	1.47 (1.33)

Covi Ppk 1,33